

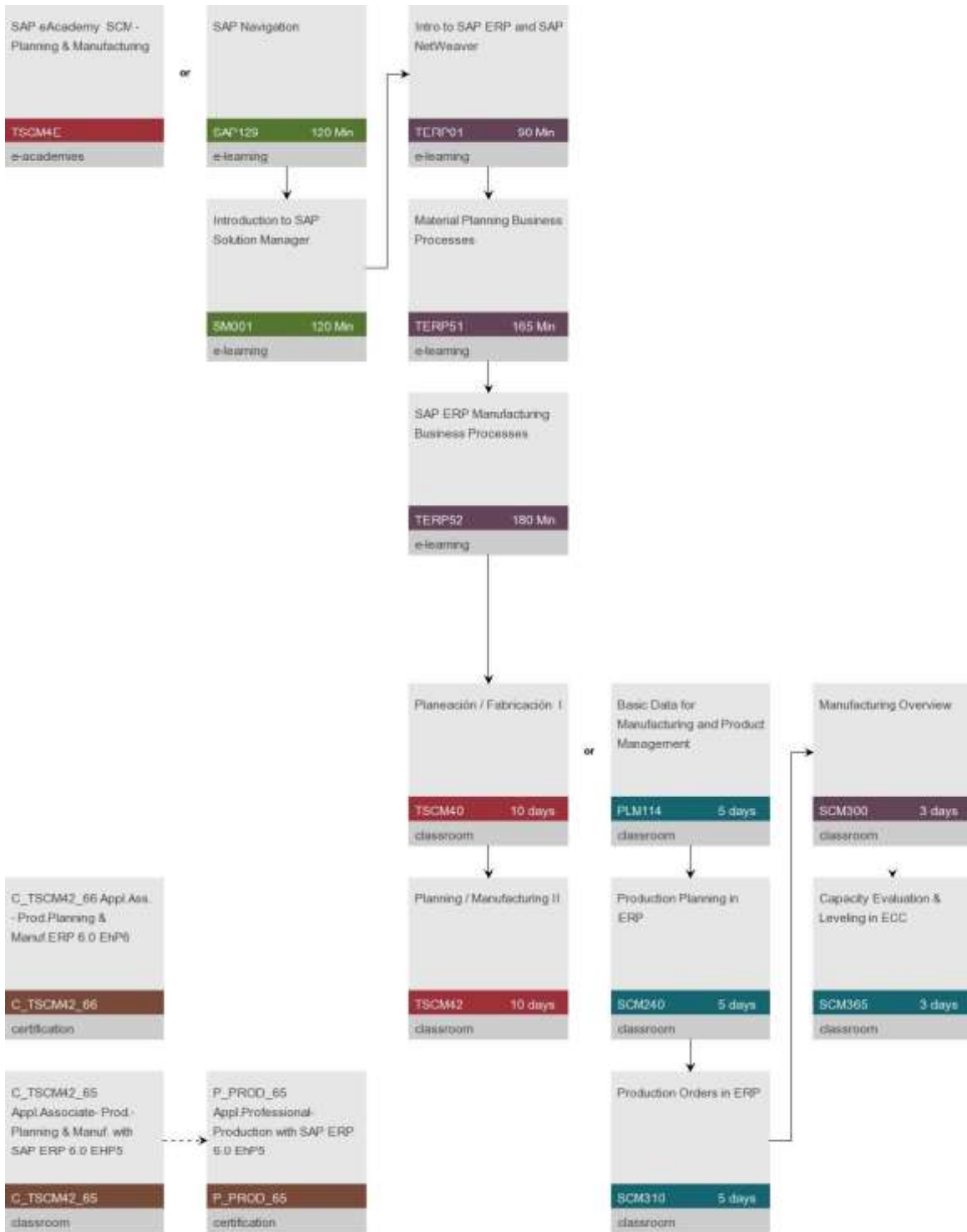


WISSEN
TECNOLOGÍA Y EDUCACIÓN

WWW.WISSENMX.COM

PLANNING & MANUFACTURING

PLANNING & MANUFACTURING



CERTIFICATION TEST

C_TSCM42_65 Appl.Associate- Prod.- Planning & Manuf. with SAP ERP 6.0 EHP5

Booking Code

C_TSCM42_65

The certification test SAP Certified Application Associate - Production - Planning & Manufacturing with SAP ERP 6.0 EHP5 verifies the knowledge in the area of Production for the consultant profile. This certificate proves that the candidate has a basic understanding within this consultant profile, and can implement this knowledge practically in projects.

Software

Number of Questions

80

Duration

180 MIN

Notes

To ensure success, SAP recommends combining education courses and hands-on experience to prepare for your certification exam as questions will test your ability to apply the knowledge you have gained in training.

You are not allowed to use any reference materials during the certification test (no access to online documentation or to any SAP system).

CERTIFICATION TEST

C_TSCM42_66 Appl.Ass. - Prod.Planning & Manuf.ERP 6.0 EhP6

Booking Code

C_TSCM42_66

The certification "SAP Certified Application Associate - Production - Planning & Manufacturing with SAP ERP 6.0 EHP6" verifies the knowledge in the area of Production for the consultant profile. This certificate proves that the candidate has a basic understanding within this consultant profile and can implement this knowledge practically in projects. The SAP Certified Application Associate can contribute to the success of the planning and implementation phases of the project in a mentored role and would typically have a maximum of three year's experience in the solution area. Project experience should not be prerequisite for a competent and well trained candidate to pass this exam.

Software

Number of Questions

80

Duration

180

Notes

To ensure success, SAP recommends combining education courses and hands-on experience to prepare for your certification exam as questions will test your ability to apply the knowledge you have gained in training.

You are not allowed to use any reference materials during the certification test (no access to online documentation or to any SAP system).

PLM114

Basic Data for Manufacturing and Product Management

Duration Location Dates Price

5 days

Prerequisites

Essential

* PLM100 Business Processes in Life-Cycle Data Management

◉SCM130 SAP R/3 Planning and Manufacturing

Overview

Recommended

* SAPPLM Overview of the SAPPLM solution

◉SAPSCM Overview of the SAPSCM Solution

Delivery

Classroom

Audience

* Project team members, super-users, users and consultants, responsible for the creation and management of material masters, bills of material (BOMs), routings (task lists) and work centers.

Content

Organizational data related to production planning and manufacturing

Creating material master data and views required to support discrete and repetitive manufacturing

Managing changes to the material master

Functions and features of bills of material (BOMs) in detail -> Standard BOM Functions

-> Phantom Assemblies -> Multiple and Variant BOMs

BOM maintenance and Reporting

Status and Action Management

BOM Redlining

Work center master data and views required to support discrete manufacturing ->

Capacity Data -> Scheduling Data

Functions and features of discrete manufacturing Task lists (standard routings) in detail

-> Routing Sequences -> Operational Details -> Usage of Production Resources and Tools (PRTs)

Task list Maintenance and reporting

Managing master data changes with and without history

User Interfaces: -> SAP GUI -> Engineering Workbench -> PLM Web User

Interface (New)

Goals

Create, maintain, and use material masters, Bills of Material (BOMs), Standard Routings (task lists) and Work Centers.

Participants will be tasked with creating master data, and demonstrating different approaches to modeling various manufacturing processes.

SAP ERP Central Component 6.0 (ECC), Enhancement Package 6

Software

Notes

Configuration of master data will be included in the participant manual as self-study materials

The content covered in this course is appropriate for users on the following SAP software releases: -> R/3 4.6C

-> R/3 Enterprise (4.7) -> ERP 2004 (ECC 5.0)

Demonstrations and hands-on exercises are conducted using an ERP 6.0 (ECC 6.0 Enhancement Package 6)

system.

CERTIFICATION TEST

P_PROD_65 Appl.Professional- Production with SAP ERP 6.0 EhP5

Booking Code

P_PROD_65

The Professional certificate builds on the basic knowledge gained by generic SAP education and experience within the respective solution area, e.g. SAP ERP Production Planning & Manufacturing. It is refined by practical experience during several implementation projects within the respective solution area. The SAP Certified Application Professional can contribute significantly to the success of the planning and implementation phases of the project and would typically have a minimum of four to seven years experience in the solution area. Suitable project experience should be prerequisite for a competent and well trained candidate to pass this exam.

Software

Number of Questions

80

Duration

Notes

Professional Certifications are targeting profiles with minimum 4 – 7 years of experience. Besides the recommended education courses also practical job experience is required and tested.

You are not allowed to use any reference materials during the certification test (no access to online documentation or to any SAP system).

SAP129

SAP Navigation

Duration

120 Min

Prerequisites

Essential

* None

Recommended

* Basic knowledge of Windows

Delivery

E-learning

Audience

* All new users of SAP Business Suite products

Content

The SAP Navigation course is designed to familiarize learners with key terms and how to navigate within the SAP system.

Logging on and off

Understanding and recognizing SAP screens, menus, fields, and special features

Recognizing SAP icons

Find out how to use 'Application Help' and the SAP Library

Set up 'Favorites' for frequently used transactions

Understanding system messages

Set up default values

Navigate SAP standard reports

Test your knowledge through review questions and system simulations

Goals

Navigate confidently within SAP

systems

Test your knowledge

Software

SAP Business Suite 7 applications

Notes

* This course is mandatory for all new users of SAP Applications to ensure you are ready to complete the exercises quickly and efficiently in subsequent SAP training courses.

SCM240

Production Planning in ERP

Duration Location Dates Price

5 days

Prerequisites

Essential

* PLM114 - Basic Data for Production

* SCM100 - Planning Overview (ERP)

Recommended

* SAPSCM - SAP SCM Application
Overview

Delivery

Classroom

Audience

Project team members

Key users

Content

Overview of production planning

Demand management (Make-to-Stock/Make-to-Order)

Executing material requirements planning

Technical processes of MRP

Evaluating and processing the MRP results

Special processes in the context of MRP

Goals

In this course you learn to understand, to configure, and to apply the concepts of demand management and material requirements planning for non-configurable materials that are provided by SAP ECC 6.0 - Material Requirements Planning (formerly known as SAP R/3 MRP)

SAP ERP Central Component 6.0 Enhancement Package 6

Software

Notes

* Please note that characteristics planning (variant configuration) is not covered by this course, but by the course PLM145 (Variant Configuration Part 1) instead.

SCM300

Manufacturing Overview

Duration

3 days

Prerequisites

Esencial

* SAPSCM (SAP SCM Solution Overview)

* SCM100 (Planning Overview (ERP))

Se

Recomienda

Delivery

Remoteclassroom

Audience

* This course is aimed at project-team members and key users (from the user departments) who are responsible for implementing shop floor control in SAP Business Suite.

Content

Order-controlled production with production orders

Order-controlled production with process orders

Repetitive manufacturing

KANBAN

Further selected shop floor control topics

Goals

* This course gives participants an overview of the production types supported by SAP Business Suite.

Software

SAP ECC 6.0 Enhancement Package 5

SAP SCM 7.0 Enhancement Package 1

The system SAP ECC contains functions of Enhancement Packs 1-5.

Notes

SCM310

Production Orders in ERP

Duration Location Dates Price

5 days

Prerequisites

Essential

- * PLM114 (Basic Data for Discrete & Repetitive Manufacturing)
- * SCM300 (Overview Manufacturing) or SCM130 (Planning and Manufacturing Overview)

Recommended

- * SCM240 (Production Planning (ERP))
- * SAPSCM (Overview SAP Supply Chain Management)

Delivery

Classroom

Audience

* This course is aimed at project-team members and key users (from the user departments) who are responsible for implementing and managing production orders with SAP Business Suite.

Content

- Order structure and processing
- Order creation
- Availability checks
- Capacity Requirements Planning (Basics)
- Order release
- Printing order documents
- Material withdrawal
- Confirmations
- Goods receipt
- Order settlement
- Archiving and deletion
- Mass Processing and Information Systems
- Further selected shop floor control topics

In this course, you learn how to use production orders which main system setting you must provide for production order execution.

SAP ECC 6.0 Enhancement Package 6

Goals The system SAP ECC contains functions of Enhancement Packages 1-6.

Software

Notes

SCM365

Capacity Evaluation & Leveling in ECC

Duration Location Dates Price

3 days

Prerequisites

Essential

* PLM114 Basic Data for Manufacturing and Product Management.

* SCM240 Production Planning (ERP)

◉SCM310 Production Orders

Recommended

* None

Delivery

Classroom

Audience

* This course is aimed at users and super-users responsible for generating and building shop floor schedules taking into considerations capacity limitations. In addition it is applicable for project team members and consultants wishing to advise implementations teams of SAP ECCs capacity planning capabilities.

Content

Evaluation of capacity loads using reports in ECC
Evaluation of capacity loads using reports using BI
Navigational Skills of Tabular and Graphical Planning tables
Detailed understanding of Capacity Leveling functionality (Strategy

Profile)

Modeling Down time Scenarios

Goals

The participants will gain a detailed knowledge of the transactions and functionality surrounding and supporting capacity planning in ECC. This will include reports relevant to capacity evaluation, and the tools necessary to correct capacity overloads when they are detected.

ERP ECC 6.0 Enhancement Pack 4

Software

SM001

Introduction to SAP Solution Manager

Duration

120 Min

Prerequisites

Essential

* Basic knowledge of SAP systems

Recommended

* None

Delivery

E-learning

Audience

Consultants
Project Managers
Project Team Leads
Project Team Members
IT Service Desk

Managers

IT Service Desk

Members

Content

* This course is meant to familiarize you with the principles and terminology of the SAP Solution Manager. You will be introduced to the benefits of using the SAP Solution Manager during the implementation of your SAP solutions and during ongoing support and operations.

Goals

Define the concept of the SAP Solution Manager
Discuss the tools provided by the SAP Solution Manager

Software

Solution Manager 7.0

Notes

Course length: 2 hours

TERP01

Intro to SAP ERP and SAP NetWeaver

Duration

90 Min

Prerequisites

Essential

* Conceptual or practical knowledge of how companies manage their businesses.

Recommended

* Basic knowledge in at least one SAP ERP application area

Delivery

E-learning

Audience

* This course is appropriate for:

- > Customers and consultants who are new to the SAP ERP solution
- > Customers and consultants with expertise in a specific ERP business process area who want to expand their general knowledge of all business processes
- > IT professionals who will be supporting the business processes used by their organizations.
- > Project team members, who need an understanding of the key integration points between business disciplines supporting business process cycles.
- > Power/Super Users and End Users who want a better understanding of the total business process cycle.

Content

* Using recorded presentations, system demonstrations, practice simulations, quizzes, and assessments you will be introduced to:

- > SAP ERP organizational levels
- > Functions and structures of master data throughout SAP ERP
- > SAP ERP analytical and reporting solutions

Goals

* At the end of this course you will be able to:

- > Identify the organizational levels used in SAP ERP
- > Explain the functions and structure of master data in supporting ERP business processes
- > Identify the various levels and types of reporting available in SAP ERP

Software

* Presentations, demonstrations, and practice exercises were carried out using:

- > SAP ERP 6.0, EhP5

Notes

Course length: 1,5 hours

This course introduces basic organizational levels and master data concepts used throughout SAP ERP. Detailed explanation of the organizational levels and master data used in the various ERP business processes is covered in the advanced courses associated with each process area.

TERP51

Material Planning Business Processes

Duration

165 Min

Prerequisites

Essential

* Conceptual or practical knowledge of how companies manage their material planning

* TERP01 Intro to SAP ERP and SAP

NetWeaver

Recommended

* SAP129 SAP

Navigation

Delivery

E-learning

Audience

* Customers and consultants who are new to the SAP ERP Material Planning Business Process

Content

Organizational levels

Master data relevant to the material planning process

-> Material Master, Bill of Material, Routing

Executing a planning run

Goals

Describe the organizational levels used in Material Planning

List the master data used by Material Planning

Describe and perform the steps in the Material Planning Process

Identify the Material Planning Process integration points

Software

SAP ERP 6.0, EhP5

Notes

Course length: 3 hours

TERP52

SAP ERP Manufacturing Business Processes

Duration

180 Min

Prerequisites

Essential

- * Conceptual or practical knowledge of how companies manage their manufacturing processes
- * TERP01 Intro to SAP ERP and SAP NetWeaver

Recommended

- * SAP129 SAP Navigation

Delivery

E-learning

Audience

- * Customers and consultants who are new to the SAP ERP Manufacturing business processes

Content

- Organizational levels in manufacturing
- Master Data for manufacturing
- Structure of the Production order
- Production order processing:
 - > Releasing orders, issuing materials, receiving materials

Goals

- Describe the organizational levels used in the Manufacturing Business Process
- List the master data used by Manufacturing Business Process.
- Describe the basic steps used in producing a product with production orders
- Create a production order, process inventory transactions, and report production confirmations
- Describe the process of order settlement
- Identify business process integration points
- Review production performance using information systems and cost management
- Reporting in manufacturing

Software

SAP ERP 6.0, EhP5

Notes

Course length: 3,5 hours

TSCM40

Planeación / Fabricación |

Duration Location Dates Price

24 days

Prerequisitos

Essential

- * Conocimiento de negocios en el área de planeación y fabricación
- * Los siguientes están incluidos en la anotación TSCM40:
- * E-learning SAP125 SAP Navegación 2005
- ‡ ERP001 Administración Habilitada por mySAP ERP ,
- * SAP220 Plan para Procesos de Inventario , los cuales usted deberá estudiar en su propio tiempo antes del inicio del curso TSCM40

Recommended

- * None

Delivery

Classroom

Audience

- * Consultores de solución que sean responsables de implementar la Planeación y Fabricación de la Cadena de Suministros con mySAP ERP y SCM

Content

Creación y administración de datos maestros: material maestro, BOM, clases, características, documentos, vistazo generalizado de la configuración de variante, centro de trabajo, asignación de rutas, recursos del producción, cambios con o sin historia, cambios en masa

Interfaz de núcleo APO para la transferencia de datos maestros y de transacción desde SAP ECC hacia SAP SCM (APO)

Planeación de producción de ERP: planeación de programa de producción, consumo y planeación con base en MRP, estrategias de planeación para producción hecha - para - existencias y hecha - para - pedido, planeación de los requerimientos de la implementación, procesamiento de los resultados de MRP

Planeación de Producción APO-PP/DS y Programación Detallada: Predicciones y órdenes de venta en APO-PP/DS, planeación de requerimientos, planeación de cantidades y habilidades, planeación heurística

Goals

- * Al finalizar este curso, usted estará en capacidad de:

-> Aplicar y comunicar datos maestros en el área de planeación y fabricación

-> Aplicar y describir soluciones para la planeación de producción

-> Utilizar su conocimiento directamente como consultor junior durante su primer período de práctica

Software

SAP SCM 5.0

ERP ECC 6.0

Notes

- * Con el fin de garantizar que usted retiene el conocimiento adquirido durante este curso y que finalice en forma exitosa el examen de certificación al término del curso TSCM42, nosotros le recomendamos que consolide el contenido en su propio tiempo al finalizar el curso.

TSCM42

Planning / Manufacturing II

Duration

10 days

Prerequisites

Essential

* TSCM40 Planning / Manufacturing

† The following are included in posting TSCM42: SM001 Introduction to SAP Solution Manager (which you must study in which you must study in your own time before the start of course TSCM40)

Recommended

* None

Delivery

Classroom

Audience

This course is aimed at project team members and People with consultants responsible for implementing Supply Chain Planning & Manufacturing with SAP ERP Central Component (ECC) and SCM.

The course is also suitable for customers who are still using SAP R/3.

Content

Order-controlled production with production orders: Overview of order categories, order types and the most important functions during the process (e.g. availability checks, material staging and withdrawal, order confirmations).

Overview of production with process orders, repetitive manufacturing, KANBAN and capacity planning

Integrated case study: implementation of a fictitious demo company using specific business processes, configuration and mapping of the company structure, master data, and business processes in the SAP system ECC.

Certification examination for Application Associate Planning and Manufacturing with SAP ERP 6.0 Enhancement Package 5.

Goals

* Utilize and describe basic functions for managing production orders (PP-SFC), repetitive manufacturing (PP-REM), process orders (PPPI) and KANBAN (PP-KAN) as further options in production management

Software

SAP ERP Central Component 6.0, Enhancement

Package 5

SAP SCM 7.0

Notes

* To ensure that you retain the knowledge gained in this course and successfully complete the certification examination at the end of course TSCM42, we recommend that you consolidate the content in your own time after the course.

TSCM4E

SAP eAcademy SCM - Planning & Manufacturing

Duration

Prerequisites

Essential

* None

Recommended

* None

Delivery

E-academies

Audience

Solution Consultants
SAP Consultants
Project Team

Members

Content

The eAcademy TSCM4e consists of following products:

- > SAP129 SAP Navigation (e-learning)
- > SM001 Introduction to SAP Solution Manager (e-learning)
- > TERP01 SAP ERP: Introduction (e-learning)
- > TERP02 SAP ERP: Introduction to SAP NetWeaver
- > TERP51 SAP ERP: Introduction to Processes in Material Planning
- > TERP52 SAP ERP: Introduction to Processes in Manuf.Execution
- > TSCM40 Planning/Manufacturing I (e-learning + student handbook)
- > TSCM42 Planning/Manufacturing II (e-learning + student handbook)
- > PLM114 Basic Data for Manufacturing and Product Mgmt.(e-learning + student handbook)
- > SCM310 Production Orders

Help Desk Support is provided for the participants to enable them to understand the training material, resolve queries and assist in assignments during the access period. In this timeframe the participants will get access to training systems to work through the exercises and demo scenarios.

For more information please contact your local training department.

Goals

Software

* SAP ECC 6.0 EHP4

Notes



CONTACTO

Tel: 01 442 234 7075
01 442 404 0921

E-mail: marketing@wissenmx.com

Web: www.wissenmx.com